



JOSEPH GILES

WELCOME TO THE WORLD OF JOSEPH GILES

We are designers, manufacturers and trade suppliers of luxury architectural hardware for doors, windows and cabinets for exclusive residential, hospitality and commercial construction projects across the globe.

Our core ranges are designed and manufactured in Britain, and are the result of a history of innovation combined with decades of experience. We are proud of our British heritage and work with the finest craftspeople across the country to deliver exceptional products for our customers.

Since 1998, we have built a reputation as one of the finest designers and manufacturers of bespoke door hardware in the UK. Our professionalism and attention to detail have secured significant contracts for the Royal Family, celebrities and many other exclusive projects.

Our product range is varied and we invest heavily in new product designs to suit the changing styles and requirements of our customers. We even offer a bespoke design service should you need something completely unique.

We provide a complete service whatever your requirements, from simple orders through to extensive door schedules, and our experts are on hand to guide you through your project every step of the way.

We love what we do, and this is a collection of some of our favourite projects.



Authorised Distributor :

SIMU VERSAILLES
INDONESIA

Panglima Polim Raya 18x,
Jakarta 12160, Indonesia +62
21 7261230

www.selarasindah.com
[ig @simu_indonesia](https://www.instagram.com/simu_indonesia)

CASINO REFURBISHMENT

This project was a refurbishment of a prestigious and stunning casino in the heart of Mayfair, London.

The casino, developed by the high-profile casino chain Crown, is a showcase of classic contemporary design and luxurious finishes. Our job was to provide beautiful ironmongery for the restaurant, bar and gaming area.

For this project, we provided a range of items including our knurled Montgomery lever handle (LV1142) and knurled cabinet pull (CP1109). In addition, our DP1022 glass door pulls, Irvine cabinet handles (CP1096) and Harrison cabinet pulls (CP1011) were also used. These products were mostly specified in our mid antique brass waxed finish, a perfect choice for the glamour of the design scheme. Our Irvine cabinet pulls were selected in our polished brass waxed finish, which provided a beautiful contrast to the dark furniture and complemented the overall aesthetic. We also supplied all the fixtures and fittings, including locks, latches, hinges, flush bolts and doorstops, in the matching finishes.

We worked in collaboration with WISH, the appointed interior designer, and the main contractor GPF Lewis, who chose us specifically for this project.

“WISH were engaged to transform the interiors of the exclusive Crown Aspinall’s private members club in Mayfair; our brief was to reconfigure the existing spaces, improve the customer flow and inject a new modern layer to enhance the existing historic backdrop.

Respectful of the architectural heritage we concentrated on developing a design to deliver new gaming spaces, a unique external terrace area and a destination restaurant. This was achieved by introducing a contemporary layer that focused on light, detail and texture, pinned away from the fabric of the building.

This sympathetic blend brought together the strong international brand vision of Crown within the much more intimate setting of Mayfair and allowed us to provide our client with a distinctive and individual interior.”

Caroline Smith, Managing Partner WISH

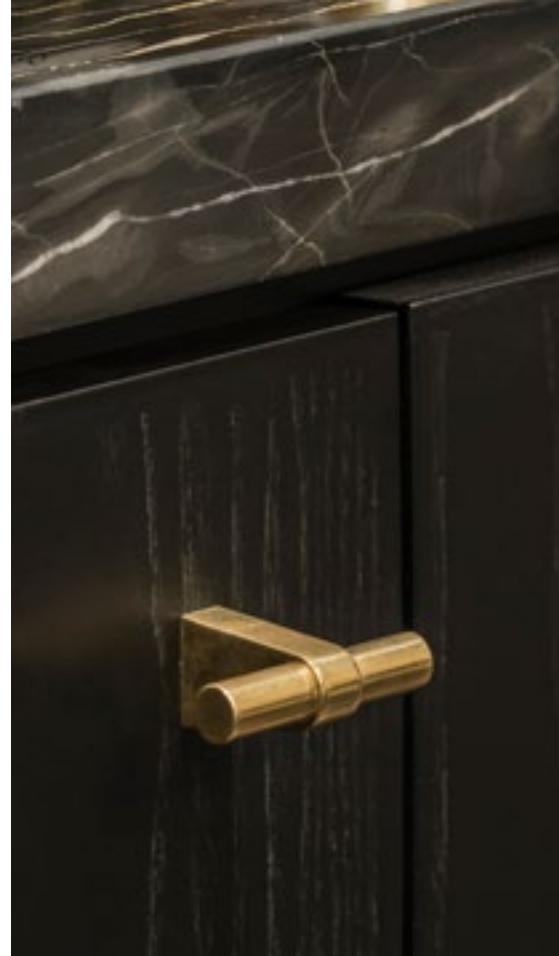
Opposite, top

CP1096 ‘IRVINE’ solid brass cabinet pulls photographed in our polished brass waxed finish

Opposite, bottom

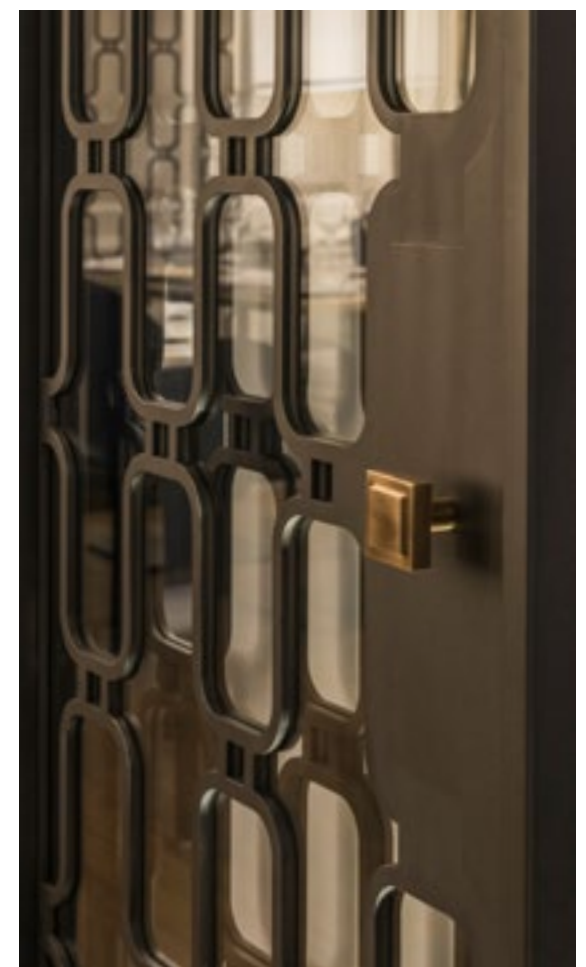
LV1142 ‘KNURLED MONTGOMERY’ solid brass lever handles photographed in our mid antique brass waxed finish





CP1096 'IRVINE' solid brass cabinet pulls photographed in our polished brass waxed finish

CP1101 'HARRISON' cabinet pulls photographed in our mid antique brass waxed finish



Opposite page
LV1142 'KNURLED MONTGOMERY' solid brass lever handles photographed in our mid antique brass waxed finish

LUXURY PROPERTY RENOVATION NOTTING HILL

This was a complete renovation of a five-storey historical Victorian property in the beautiful district of Notting Hill in west London. The shell of the home was intended to be left intact, retaining the history of the building; however, much of the inside was to be modernised, and our job was to provide the architectural hardware which suited the property's heritage and the new design scheme.

To accomplish this, we provided a range of our window sashes and casements: our Darlington I lever handle which has a Victorian aesthetic, as well as our Archibald (DK1022) and Beresford (DK1046) doorknobs.

To complete this project, we worked closely with an architect, Buller Welsh, and the builder, GPF Lewis; a collaboration that proved fruitful and efficient.

"Buller Welsh were approached by the client for this project to undertake a modernisation of their home whilst retaining the charm and traditional features of the existing building and maintaining a sense of quality. All of this led towards the use of dark bronze for accessories throughout the build. A timeless, classic material which complements modern and traditional design alike.

The client developed a palette of colours from Little Greene and worked with us on choosing complementary stone, tile and leather finishes as well as light fittings. We needed to source ironmongery that would sit comfortably in a traditional building whilst demonstrating a contemporary edge to unify the traditional features with the modern interventions. Joseph Giles were able to deliver this with their Beresford Door Knob and other items.

We selected the products with the client to ensure the style and finishes unified every aspect of the project, with the dark bronze ironmongery matching the joinery edges, and electrical accessories of the upper floor. Brushed nickel and satin stainless steel were used on the lower ground floor to complement the commercial kitchen units."

Stephen Bardsley, Buller Welsh

Opposite

HG1003 solid brass washered
butt hinges

DK1046 'BERESFORD' solid
brass door knob

Both photographed in our dark
bronze waxed finish





SF1049 recessed flush pull
photographed in our dark bronze
waxed finish



DK1046 'BERESFORD' solid brass
door knob photographed in our
brushed nickel finish

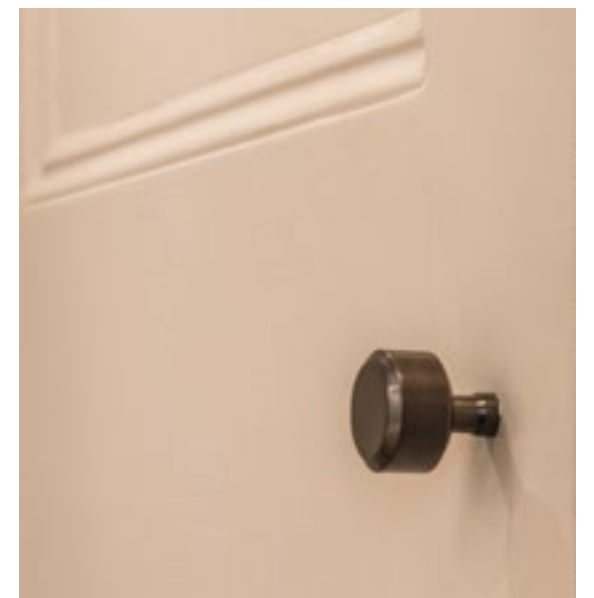


Top

DK1046 'BERESFORD' solid
brass door knob photographed
in our dark bronze waxed finish

Right

CP1006 'ARCHIBALD' solid
brass cabinet pull photographed
in our dark bronze waxed finish



STUNNING GOLF AND COUNTRY CLUB

This project for a luxury golf club southwest of London proved to be a new experience, as it was our first time working with this type of commercial property. The project specified the modelling of a new members' clubhouse, which resides on the longstanding course and main reception. The club offers members luxurious services, such as the chance to relax in their spa, three beautiful restaurants and a hotel within the estate. Due to the nature of the environment, this club is members' only, with high-society figures opting to join for a retreat from London's fast-paced city life.

We supplied our beautiful handles LV1113, DP1009, LV1029 and LV1050 for this project, as well as escutcheon ES1001 and lock LA1007.

We worked together with an interior design firm, a fit-out contractor and a metal door subcontractor to achieve the end result.

Opposite, top

LV1113 'RATHBONE' solid brass lever handle photographed in our mid antique brass waxed finish

Opposite, bottom

DP1009 'CUBE' door pull handle photographed in our mid antique brass waxed finish





DP1009 'CUBE' door pull handle
photographed in our mid antique
brass waxed finish



LV1052 'DEWHURST' lever
handle with non-standard rose
fitting photographed in our mid
antique brass waxed finish



LV1113 'RATHBONE' solid brass
lever handle photographed in our
mid antique brass waxed finish

LUXURY RESIDENTIAL DEVELOPMENT MAYFAIR

Joseph Giles were specified on this large-scale project, which involved the remodelling of an exquisite and luxurious apartment complex in the heart of Mayfair.

The complex comprises of seven luxury apartments; the residence includes a swimming pool with a therapeutic air lounge, exercise studio, a sauna, and a spa. Located on the historically significant South Audley Street, and only a stone's throw away from Hyde Park, the décor in this building needed to live up to its surroundings and so the owners employed Joseph Giles to manage the architectural hardware for the project. We supplied all door hardware (many of the designs were bespoke) as well as a selection of cabinet fittings.

"The handles were key in our decision-making process. The handles are one of the first things you see and touch when you enter a building and that sets the stage for the rest of your experience. Congratulations to Joseph Giles on their wonderful design."

Rohit Chadha, Managing Director Luxlo Property

Opposite

LV1090 'DRAYTON' lever handle
on bespoke backplate photographed
in a custom almond gold finish





LV1090 'DRAYTON' lever handle photographed in a custom almond gold finish



Bespoke fluted door pull photographed in our polished chrome finish



LV1082 'SOLID BRONZE MOLTEN TEXTURE' lever handles on bespoke size backplate photographed in our polished nickel finish



CP1018 'CUBE' glass cabinet pulls photographed in our brushed nickel finish



LV1050 'DEWHURST' solid brass lever handle with magnetic lock photographed in our polished nickel finish



SF1013 'DEWHURST' solid brass recessed pull photographed in our polished nickel finish

LUXURY RESIDENTIAL REFURBISHMENT IN CHELSEA

The prestigious district of Chelsea boasts a new 11,000 sq ft mixed-use development of luxury apartments and a commercial unit over two floors. Situated in a prime location, the apartments range in size from 700 to 1,300 sq ft and are a combination of one and two-bedroom units, as well as a stunning penthouse. The scheme offers bright and spacious accommodation, and the contemporary style is finished to a high standard of specification and design. The developer recognises that good quality fixtures and fittings add character and desirability to their developments and will always stand the test of time.

Given that Joseph Giles has fitted and designed products for many homes, we are used to the routine challenges that this often brings. This project involved a tight scheduling process to meet the timescales of the multi-unit development.

Joseph Giles delivered a varied service of door and cabinet hardware to the apartments and communal areas.

Opposite, top

Bespoke centre door knob
photographed in our dark bronze
waxed finish

Opposite, bottom

LV1005 'WEDGE' solid brass
lever handle, LA1004 large case
latch, HG1043 high performance
washed butt hinge and BL1001
lever action flush bolt

All photographed in our dark
bronze waxed finish





Top

SF1016 'CUBE' solid brass recessed pull and SF1056 solid brass pocket sliding door end pull photographed in our dark bronze waxed finish

Left

DP1038 'HARRISON' solid brass door pull handle and ED1035 Euro cylinder escutcheon pull photographed in our dark bronze waxed finish



Top

SF1049 rectangular solid brass recessed pull photographed in our dark bronze waxed finish

Left

LV1005 'WEDGE' solid brass lever handle photographed in our dark bronze waxed finish

LUXURY DEVELOPMENT IN PICCADILLY, LONDON

This project, focused around a stunning luxury development in London's bustling Piccadilly district, was an exceptional opportunity to be a part of.

The design of this development was reminiscent of the Jazz Age with a modern twist. With gold trim doors, geometric shapes and pops of colour, we supplied our beloved Dewhurst Art Deco style hardware to match the beautifully vibrant and eclectic surroundings. This included both cabinet and door fixings. Most of our finishes were supplied in our polished nickel or brushed brass waxed, depending on the individual design scheme of the apartment. In addition, we also provided ironmongery for the communal stairwell that runs throughout the entire building, allowing the residents to engage with our quality design and products on a regular basis.

Throughout the project, we were sure to demonstrate and follow a clear schedule of our process and delivery times to the contractor. We also routinely held product meetings and offered product samples at every stage, all in a bid to demonstrate our efficient and transparent service.

Opposite, top

CH1012 'ROLLED & HAMMERED' solid brass cabinet handle photographed in our polished nickel finish

Opposite, bottom

LV1052 'DEWHURST' solid brass lever handle photographed in our polished nickel finish





Clockwise from top left

CH1012 'ROLLED & HAMMERED' solid brass cabinet handle photographed in our polished nickel finish

DC1003 heavy duty concealed overhead door closer photographed in our polished nickel finish

HG1039 high performance washed bearing butt hinge photographed in our brushed brass waxed finish



SF1016 'CUBE' recessed pull with privacy turn and emergency release

LV1052 'DEWHURST' lever handle

Both photographed in our brushed brass waxed finish

LUXURY RESIDENTIAL APARTMENT

This was a complete renovation and refurbishment of a luxury residential duplex apartment in Mayfair, in the heart of London. BASE Interior were the designers selected for this project and were tasked with delivering a contemporary, luxurious and calming living space using state of the art technology for the homeowners. The existing décor of the property had been untouched since the 1970s and had retained most of its original period detailing; some of the motifs were referenced within the new scheme, including the bronze inlays within the doors.

Joseph Giles were specified to provide a range of our signature products which included door and cabinet hardware throughout, as well as window fittings in both our mid antique brass waxed and dark bronze waxed finishes. The scheme incorporated a variety of materials and textures including solid parquet flooring, marble and bespoke panelling. These were typically darker in colour, and were set against a backdrop of muted neutral shades, which delivered a beautiful contemporary and luxurious feel. To enhance the design scheme, BASE Interior chose our Montgomery and Fonteyn lever handles, as well as our Deep Hammered cabinet pull handles.

The end result of this project has remained as one of our favourites, not only for the beautiful materials and textures, but also because despite its complete renovation it has retained its period charm. Throughout the project, we provided a full hardware scheduling service, project meetings and routine site visits. We were delighted to be a part of delivering this stunning project.

Opposite

Bespoke 'MONTGOMERY'
pull handle

CH1082 solid brass semi-circular
'Deep Hammered' cabinet handle

Both photographed in our mid
antique brass waxed finish





Bespoke centre door knob
ED1008 solid brass letter flap
ED1026 security door viewer
All photographed in our
polished chrome finish



ED1026 security door viewer
and ED1009 solid brass letter flap
photographed in our mid antique
brass waxed finish

Opposite

Bespoke 'MONTGOMERY' door
pull handle photographed in our mid
antique brass waxed finish



Bespoke 'MONTGOMERY' door pull handle photographed in our mid antique brass waxed finish



LV1108 'MONTGOMERY' lever handle and SF1003 recessed pull photographed in our mid antique brass waxed finish



BL1008 solid brass surface bolt photographed in our mid antique brass waxed finish



LV1108 'MONTGOMERY' lever handle and emergency release photographed in our mid antique brass waxed finish



LV1108 'MONTGOMERY' lever handle and privacy thumbturn photographed in our mid antique brass waxed finish

LUXURY FAMILY RESIDENCE

The project contributed to the creation of a breathtaking 12,500 square foot family home in Oxshott, Surrey. The home sits on an acre of land and has a stunning entrance hall and cinema with an incredible leisure complex with pool, gym and sauna. Aspire Luxury Properties Limited were the main contractor and partnered with us in order to make the design a reality. Our goal was to make the house luxuriously modern.

In order to make this modern space, we supplied our Wilson and Harrison collections; all in our timeless dark bronze waxed finish. The Wilson is known for its intricate square design, while the Harrison features smooth lines with its sleek indented motif. To give the hardware a slightly softer look, we customised the products to fit on round roses instead of our standard square ones. Both are perfect accents to the space and fitted beautifully within the greater design scheme.

We were able to deliver the product customisations on time with a smooth and efficient delivery service. Throughout the process, we offered samples, routine site visits and a full hardware and pictorial schedule, which allowed for a harmonious team effort. The combined efforts of this project led to an award winning home. We were excited to have worked with Aspire Luxury Properties Limited (www.aspireluxuryproperties.com).

Opposite, top

LV1114 'WILSON' lever handle on bespoke rose photographed in our dark bronze waxed finish

Opposite, bottom

CP1012 'CHEVAL' swing cabinet pull photographed in our dark bronze waxed finish





Opposite

LV1140 'WILSON II'
lever handles

DP1038 'HARRISON' door
pull handle

Both photographed in our dark
bronze waxed finish



Top

LV1140 'WILSON II' lever handles

Bottom

HG1038 very high performance fire
rated concealed bearing butt hinge

DP1038 'HARRISON' door
pull handle

All photographed in our dark
bronze waxed finish





DP1038 'HARRISON' door pull
handle photographed in our dark
bronze waxed finish



Opposite, bottom
LV1140 'WILSON II' lever
handles on bespoke roses
photographed in our dark
bronze waxed finish



CONTEMPORARY LONDON TOWNHOUSE

This project involved the complete refurbishment and renovation of a London townhouse, including structure and design, to create a stylish contemporary family residence designed by Guy Stansfeld Architects.

Our client approached us during the early stages of the project and had invited us to site to obtain the requirements for the project. We were tasked with providing a selection of contemporary door and window hardware in brushed brass waxed.

The client chose our iconic LV1045 Fonteyn lever handle as well as other items throughout the property. Our specialists attended a follow up meeting to finalise and ensure the hardware arrived within the completion deadline.

The result of this project was a masterpiece of contemporary design. The attention to detail and fantastic contrasts of our brushed brass waxed hardware against polished concrete flooring and white walls and doors was exquisite, a true Guy Stansfeld masterpiece.

Opposite

LV1045 'FONTEYN' lever handle and privacy thumbturn photographed in our brushed brass waxed finish





Top and left

WN1009 'CUBE' sash window lift
and WN1013 'CUBE' sash window
fastener photographed in our
brushed brass waxed finish

Opposite page

LV1045 'FONTEYN' lever handle
photographed in our brushed
brass waxed finish

APARTMENT IN GRADE II LISTED BUILDING

This Grade II-listed property, on London's gorgeous and sought-after Park Lane, required a complete refurbishment and renovation over two floors. We worked with Synergy Lifestyle (www.synergylifestyle.com), and their head interior designer Guillermo Gomez to achieve this. The client wanted a modern twist on Art Deco, and so, being lovers of Art Deco ourselves, we were able to provide a large variety of products that would make any jazz-era aficionado envious.

One of our most varied offerings on a project, we supplied a diverse range of products with different textures, aesthetics, sizes and finishes for door and cabinet fittings. This included a pull from our expertly crafted Hammered & Rolled range, textured plates, Williamson handles, flat bar handles and our Sloane cabinet pulls. These were finished in polished nickel, dark bronze waxed or mid antique brass waxed in order to seamlessly integrate and suit the design scheme of the room. The designer expertly paired texture, like the shagreen inlaid doors, and colour in order to create visually stunning spaces to delight the homeowner and their guests.

The homeowner was delighted with the result and we, in turn, were thrilled to be a part of realising their design vision. We ensured that a full hardware schedule was always available for visibility and extended our bespoke design service to the project in order to personalise it as much as possible. The resulting home was an inspiring blend of textures and muted colours, demonstrating the elegant mix of eclectic taste with restraint.

Opposite

LV1085 'WILLIAMSON JNR.' solid brass lever handle on a bespoke rose photographed in our dark bronze waxed finish





CH1012 'HAMMERED & ROLLED' solid brass cabinet handle photographed in our mid antique brass waxed finish



CP1011 'SLOANE' solid brass swing cabinet pull photographed in our brushed nickel finish



DP1028 'MOLTEN TEXTURE' solid bronze door pull photographed in our dark bronze waxed finish

CONTEMPORARY 5-STOREY TOWNHOUSE

This ultra-modern five-storey townhouse was being completely remodelled and extended, including the creation of a basement level and adding a garden, leaving only the original roof and facade remaining. We worked closely with a top architect, contractor and the end-client to ensure the production of a modern marvel.

In order to achieve the sleekness and edge that a modern aesthetic requires, we created bespoke products in polished stainless steel in order to achieve maximum shine. This included luminous sliding flush handles and window sashes, ensuring that even tiny details looked cohesive to the grander design scheme. We also supplied products from our Cube range, one of our most minimal and bold designs, which paired excellently with the stainless steel. Additionally, we provided our Dowson handle, a range known for its sharp edges and smooth surface. The products were a huge part in ensuring the modernity of the home was showcased, leaving no stone, or door knob, unturned in the process.

The end result of this home ended up being one of our favourites simply because of the scope of its attention to detail and sheer beauty. Certainly, this showstopper of a house creates a bold and forward-thinking statement, and we were very pleased to offer our services to its creation. Our complete and visible hardware schedule and ability to deliver the bespoke products in a timely manner allowed for this project to run incredibly smoothly, to everyone's delight.

"The design scheme was influenced by the client's extensive artwork collection which takes pride of place in every room. The hardware needed to complement this and reflect the contemporary feel of the house. Joseph Giles designed a number of bespoke products specifically for this project and supplied their Cube lever handles in polished stainless steel which was the perfect accompaniment to the property. We are delighted with the end result."

Stephen Fletcher RIBA, Stephen Fletcher Architects Ltd.



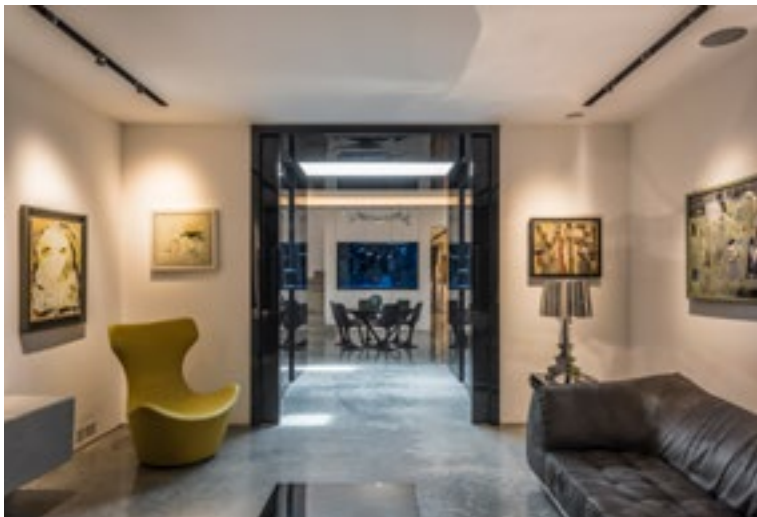


Top

Bespoke recessed sliding door handle photographed in our polished stainless steel finish

Left and opposite

Bespoke recessed sliding door handles photographed in our dark bronze waxed finish





From top to bottom

WN1009 'CUBE' sash window lift photographed in our polished nickel finish

Bespoke recessed sliding door handle photographed in our polished nickel finish

Opposite

ED1002 'BERKELEY' statement entrance door pull photographed in our polished nickel finish

BEAUTIFUL CLASSIC SINGLE DWELLING

A spacious multi-level home, refurbished to a high standard with a beautiful contrast of classic, ornate and contemporary styling.

The main challenge on this project was the tight timescale. The work was already well in progress, and an accurate hardware schedule was required quickly to ensure everything ran smoothly. Once agreed, the short length handles required had to be produced and finished in our mid antique brass finish.

The result is a calm, luxurious and beautiful home with a sense of peace and space. The antique brass finish hardware throughout gives a warm tone that blends with the light wood flooring and adds a contrast to the cool white paintwork, and the use of pocket sliding doors throughout adds to the open feel.

Designed by - Goldstein Ween Architects

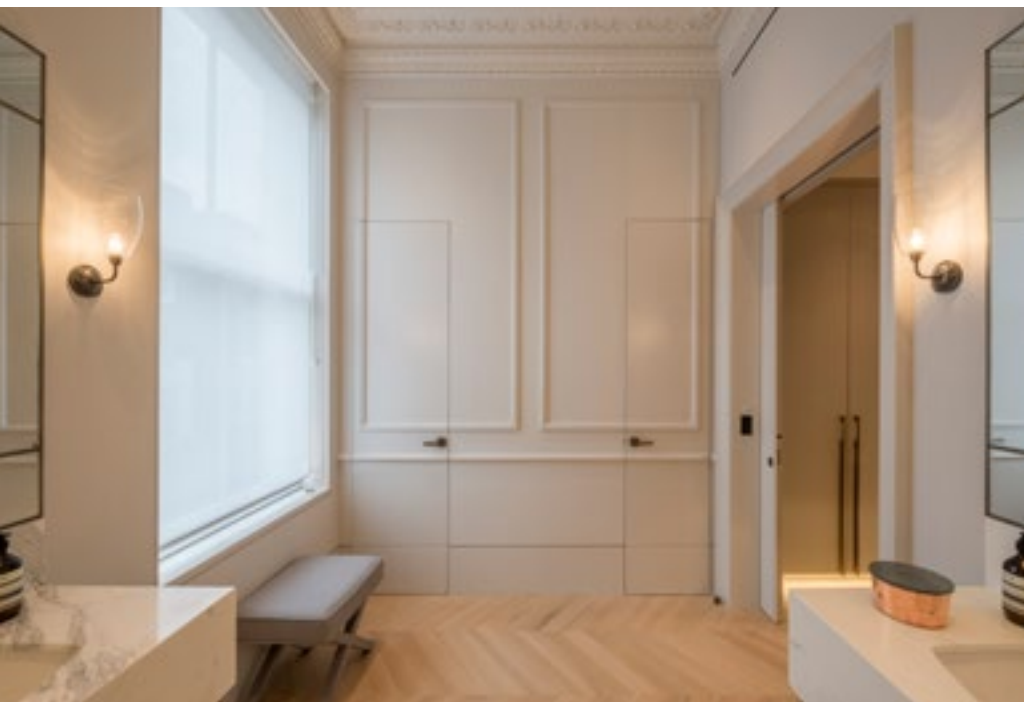
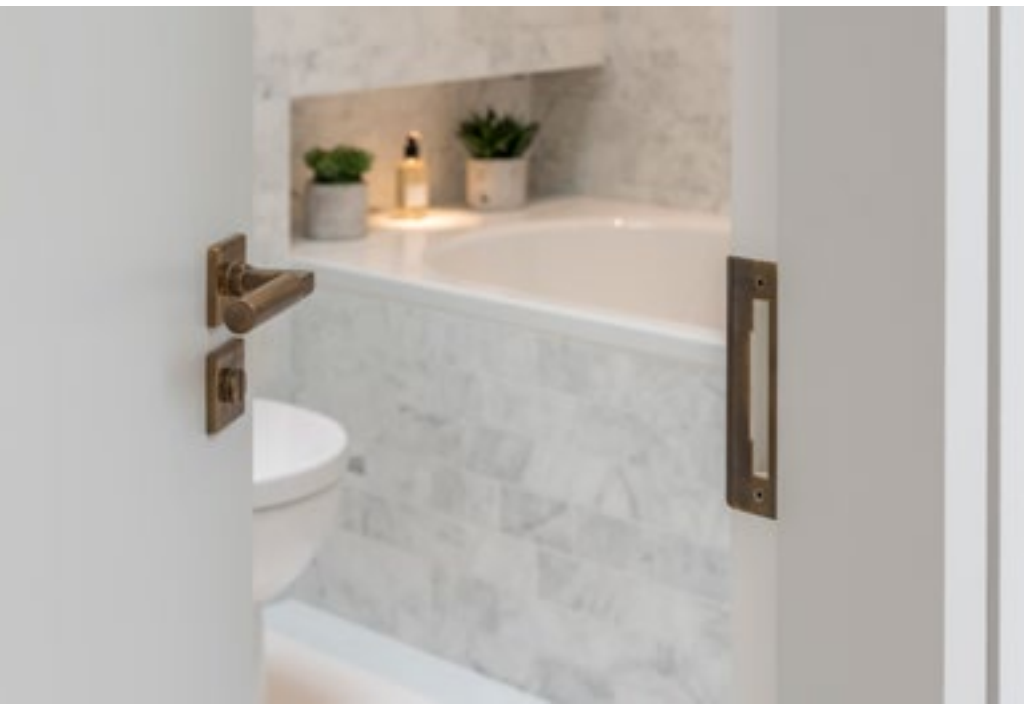
Opposite, top

ED1002 'BERKELEY' statement entrance door pull and ED1026 security door viewer both photographed in our mid antique brass waxed finish

Bottom

SF1054 round solid brass recessed pull photographed in our mid antique brass waxed finish





Top

Bespoke door lever and LA1005 latch lock photographed in our mid antique brass waxed finish

Bottom and opposite, top

SF1054 round recessed pull and LA1002 sliding door hook lock photographed in our mid antique brass waxed finish



Bottom, left

WN1016 sash fastener photographed in our mid antique brass waxed finish



Bottom, right

Bespoke door lever photographed in our mid antique brass waxed finish

MY TURQUOISE MOTOR YACHT REFIT

The breathtaking 181ft/55.4m custom motor yacht Turquoise was custom-built in 2011 and has recently undergone a considerable interior refit. Her luxurious, contemporary interior was conceived by the award winning team at H2 Yacht Design.

Turquoise's interior layout sleeps up to 12 guests in six staterooms, including a master suite, one VIP stateroom, three double cabins, and one twin cabin. She carries 13 crew on board to ensure a relaxed luxury yacht experience.

"Joseph Giles produced some wonderful hardware complementing our design for this luxurious refit project. It is a pleasure to work with this professional company"

Serena Lawson-Smith, Senior Interior Designer, H2 Yacht Design

Opposite, top

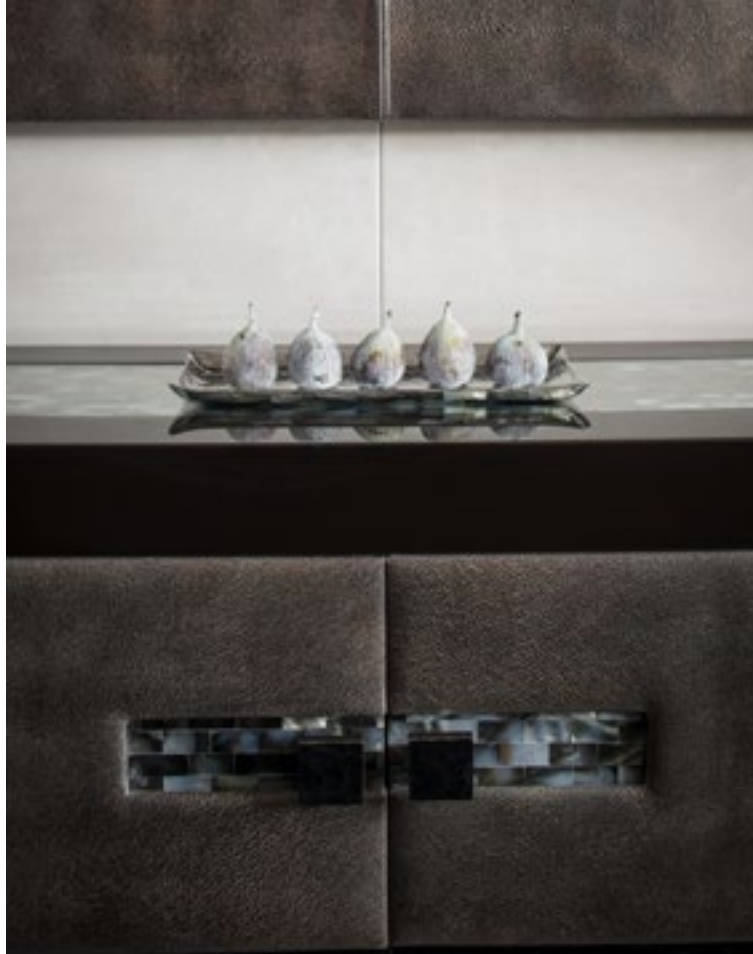
CH1036 'Hammered' cabinet handle photographed in our polished nickel finish

Opposite, bottom

CP1014 'Hammered' cabinet pull photographed in our polished stainless steel finish

NB: Photography supplied by kind permission of H2 Yacht Design.





Top

CP1014 'Hammered' cabinet pull
photographed in our dark bronze
waxed finish

Bottom

CH1036 'Hammered' cabinet
handle photographed in our
polished nickel finish



Top

DP1029 'Hammered' door pull
photographed in our polished
nickel finish

Bottom

Bespoke 'Hammered' door pull
photographed in our polished
nickel finish

CITY RESIDENCE

This project centred around a traditional central London home. As such, we were working with a classic design scheme. However, along with the property developer and contractor, the owner wanted us to help give the home's historic aesthetic a contemporary twist. And so, being purveyors of details that make a difference, we were happy to oblige.

We chose products that we believed would truly enhance the already-existing design scheme yet offer a modern component to elevate the space. Therefore, the Arnett doorknob was the perfect choice. Made from the finest grade solid brass, the unique drum motif of the knob added a wow factor when fixed as a centre doorknob, appearing on the front door, which was great for a first-impression and in elegant contrast to the door's dark shade. We also supplied our Hurleigh doorknobs, whose reeded motif paired wonderfully with the Arnett and were included on the property's interior doors. Other products included ones from our Williamson range, Recessed Pull range and Darlington I range; a beautiful mixture of classic styles finished in our mid antique brass waxed.

Throughout the project we provided a full hardware scheduling service, project meetings and routine site visits. We also added bespoke touches to some of our ranges to accommodate the style of the different doors. This all led to an incredible end result that added a real element of charm to the already stunning home.

Opposite page, top

DK1017 'HURLEIGH' door knob photographed in our mid antique brass waxed finish

Bottom

DP1039 'WILLIAMSON' door pull photographed in our mid antique brass waxed finish

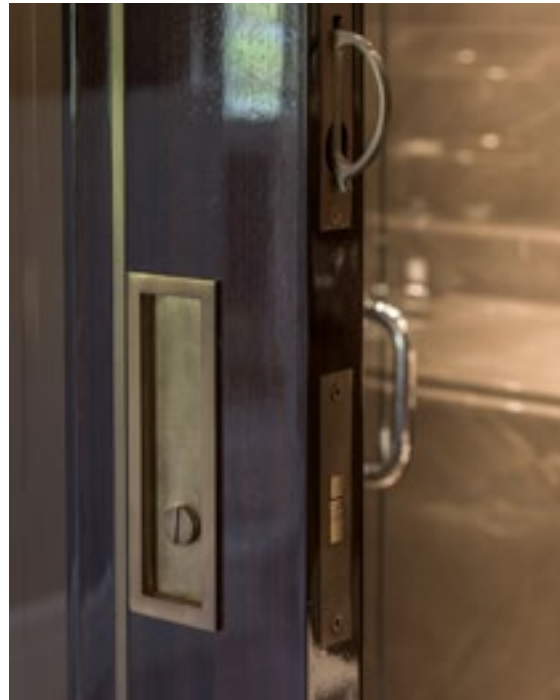




DK1017 'HURLEIGH' door knob
photographed in our mid antique
brass waxed finish

Opposite page

DK1018 'ARNETT' door knob
photographed in our mid antique
brass waxed finish



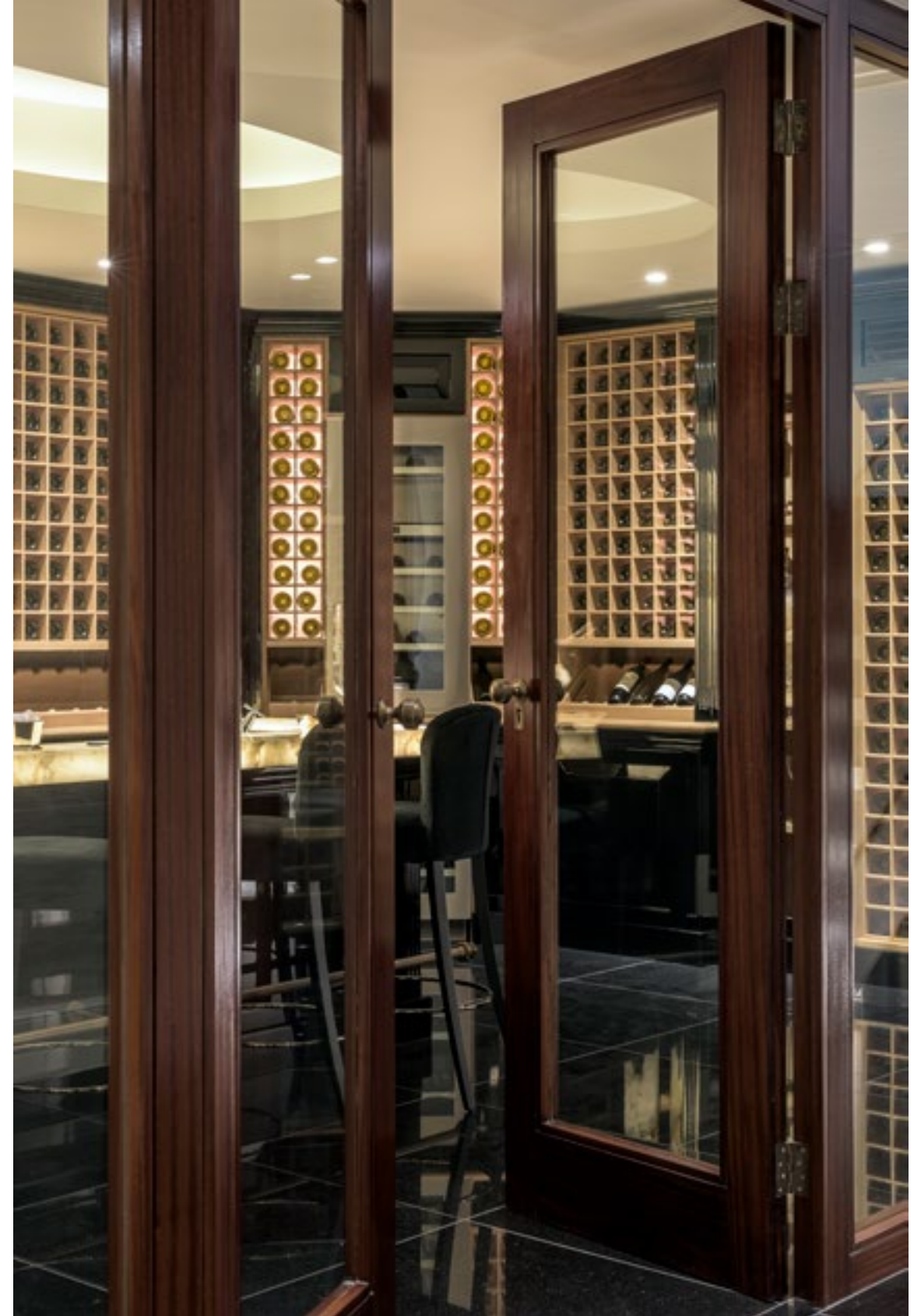
Clockwise from top

SF1049 rectangular recessed pull

DK1021 'FOWLER' door knob

SF1050 rectangular recessed pull with privacy turn and emergency release and SF1056 pocket sliding door end pull

All photographed in our mid antique brass waxed finish



DK1017 'HURLEIGH' door knob
photographed in our mid antique brass waxed finish

LUXURY APARTMENTS & PENTHOUSE

This project was for the design of a beautiful residential complex, comprised of luxury apartments and penthouses, in London's prestigious Marble Arch area. This was our first project of many with 1508 London, a design studio that specialises in luxury design. We also worked with the property developer, architect, main contractor, joinery and glass sub-contractors, and the client's representative to achieve a cohesive and high-quality design over the property's seven floors.

For the complex's single doors, we used our Bennett lever handles; however, instead of the bridle leather we normally use on the handles, we wrapped it in our luxurious and unique faux shagreen, adding both a visual and tactile interest. For the double doors, we used our Remmington doorknobs, known for their stepped circular motif, which provided an interesting contrast with the lever handles. We also used a range of unique products with special materials, including glass doorknobs. In keeping with the theme of the faux shagreen-wrapped Bennett lever handles, we added the material to door pull handles for glass doors and sliding door pulls. Since the penthouses were bespoke design schemes, with some including wine cellars, we created bespoke products, such as shower handles and other ironmongery, to ensure that each space had its own unique characteristics.

Because this project was so diverse, we went above and beyond in ensuring an amazing end result. We provided detailed hardware schedules at every step, developed a detailed master keying strategy, bronze finish co-ordination, sample boards for approval, pictorial schedules, routine site visits, site surveys, meticulous project management and CAD drawings of bespoke products. After these rigorous endeavours, everyone involved was immensely pleased with how stunning the complex turned out to be. It truly lived up to its elite status.

"Joseph Giles shares our desire for exquisite detailing, enabling projects to be of the highest calibre."

Hamish Brown – Partner, 1508 London

Opposite

DK1044 'REMMINGTON' solid brass door knob photographed in our dark bronze waxed finish





Left and opposite

DK1044 'REMMINGTON'
solid brass door knob on bespoke
rose photographed in our dark
bronze waxed finish

Bottom

Bespoke cremone bolt and
handle photographed in our dark
bronze waxed finish





CP1061 'ENID' solid brass and glass pebble cabinet pull photographed in our dark bronze waxed finish



LV1107 'BENNETT' lever handle photographed in our dark bronze waxed finish with hand stitched bespoke faux shagreen



Bespoke recessed pull photographed in our dark bronze waxed finish with bespoke faux shagreen insert



Bespoke shower handles photographed in our polished stainless steel finish

RESIDENTIAL DEVELOPMENT

This endeavour was part of a complete refurbishment of a stunning four-storey Chelsea home. In typical Chelsea style, the home was traditionally and beautifully designed, yet the homeowners wanted to modernise their space. Together with the architect and property developer, we sought to transform this home with the highest standards to match this prestigious London district.

Keeping our goal in mind, we chose our Arlington handle, known for its classic Art Deco appeal, and paired it with sliding glass doors, allowing for a beautiful mix of modern and contemporary design to shine throughout the property. We finished the handles in our dark bronze waxed finish, allowing for a deep colour that will beautifully develop over time and use. Using our bespoke design service, we also ensured that each piece was custom made with matching thumbturns and release sets, as every detail counts in delivering the best possible end result.

The result was a beautiful home that responded exactly to the client's needs and expectations. We offered a full hardware scheduling service, site visits and project meetings at every step of the project to ensure maximum visibility for the client and our team. The home stands out for its daring mix of contemporary and classic design, making it truly customised to the owner.

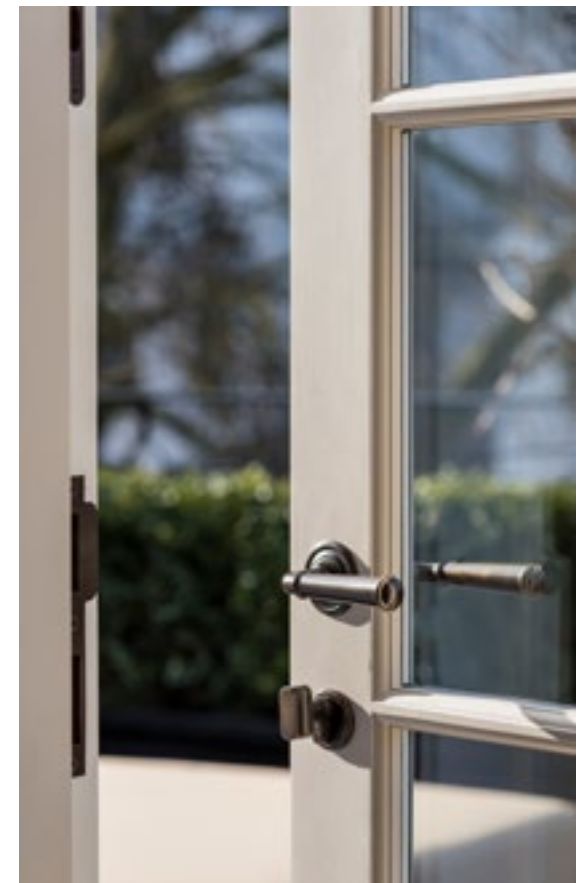
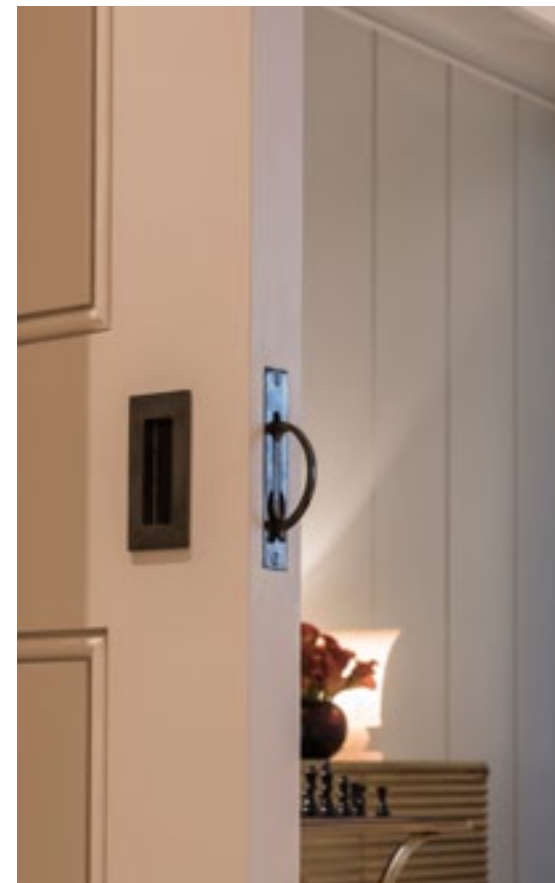
Opposite,

Bespoke door knobs photographed
in our dark bronze waxed finish





Recessed pull photographed in
our dark bronze waxed finish



Opposite, clockwise from top

EP1003 'CUBE' edge pull

SF1003 recessed pull and SF1056
pocket sliding door end pull

'DARLINGTON II'
lever handle

All photographed in our dark
bronze waxed finish

NEW BUILD RESIDENTIAL PROPERTY

Following the demolition of the existing building, this new north London home, which still retained its Victorian stucco front, was to be built from scratch. Given the scope of the project, we worked alongside an architect, interior designer, contractor, quantity surveyor, project manager and developer in order to make it as efficient as possible.

Often, a design scheme will have a set colour palette for ironmongery, which will be used throughout the property. However, this occasion proved to be different, as we supplied a variety of products in different colours and textures to match the bold scheme of the property. As such, we provided our Darlington lever handle in a variety of leather wraps, including our rare shagreen material, which not only added a beautiful colour, but a pop of texture as well. We also mixed hardware sets, providing a set that was finished in our brushed nickel on one side of the door and our dark bronze waxed on the other, thus allowing each room to have a truly unique look. Besides our textured shagreen, we provided a mix of leather and glass pieces, adding a variety of not only texture, but materials too. To finish it off, we offered bespoke solutions, such as special hinging and lock mechanisms to suit the extra-thick internal doors.

Although the house blended in with its Victorian surroundings on the outside, the inside proved to have a beautifully eclectic design that reflected the homeowner's vision perfectly. Throughout the project, we provided a detailed ironmongery schedule, routine site visits, attended client meetings, provided sample handles in their requested finishes, and produced sketches and CAD drawings for bespoke items. As a result, we were able to consistently understand and make real the client's wishes; being a part of creating a home that is truly remarkable.

"Bear Rene had the vision to push boundaries and expectations on this project utilising a timeless luxury palette with complex finishing. This was seamlessly coordinated to maintain flow yet interest as you move through the floors of this expansive villa. Joseph Giles provided their customary high-end service with stunning full sized samples to ensure the look was encapsulated exactly as required. The technical requirements were integrated perfectly to deliver a true showcase for the project team and client. The best part of these fittings is they improve with age."

Nicola Oaten, Bear Rene

Opposite

ED1001 'BELGRAVE' entrance door pull photographed in our brushed nickel finish





Top

CP1063 solid glass cabinet pull

Bottom

HG1011 washed bearing projection butt hinge

'DARLINGTON II' lever handle with hand stitched shagreen leather

Both photographed in our dark bronze waxed finish

Opposite

Bespoke small rectangular recessed pull photographed in our dark bronze waxed finish





Above

'DARLINGTON II' lever handle with hand stitched shagreen photographed in our dark bronze waxed finish

SERVICED APARTMENT

For this project, we supplied door, window and cabinet hardware to this beautiful prime-location apartment. We worked alongside the already existing decor, which was a clean, open and modern space with a white colour palette.

To add a beautiful contrast to the white colour scheme of the property, we supplied our flush pulls in our dark bronze waxed finish. These also matched the modern aesthetic with their clean, sleek lines and minimalist design. We also provided the equally modern Cube edge pull, which complemented the space and the flush pulls exceptionally. These products looked amazing on the natural oak doors and white cabinetry of the home, which showcased our product's versatility and what it adds to any existing design space.

The homeowner was impressed with our dedication in elevating their space without disrupting their existing design scheme. The result was an already beautiful, harmonious and modern home that was enhanced by our provision of subtle, yet impactful hardware details.

Opposite

EP1003 'CUBE' solid brass small edge pull photographed in our dark bronze waxed finish





Top and bottom

SF1014 rectangular offset solid brass recessed pull in bespoke size photographed in our dark bronze waxed finish

Opposite

EP1003 'CUBE' solid brass small edge pull photographed in our dark bronze waxed finish

KNIGHTSBRIDGE PENTHOUSE

We had the chance to work on the refurbishment of a luxury Knightsbridge penthouse as part of a wider project by top interior designers Staffan Tollgård Design Group to renovate and redecorate a selection of their clients' properties. Working closely with the design firm and the contractor, we provided top-notch accents to this penthouse, which spanned the width of three properties.

For this endeavour, we supplied many bespoke items, including long flush pulls to match the elegant interior doors. Other products included our Holmes lever handle, which was wrapped in our beautiful bridle leather, and some offset flush handles that wonderfully complemented the space. In a bold design move, we also supplied our Cube doorknobs, which add a powerful dose of geometric symmetry to any aesthetic. To match the Cube doorknobs, our Cube edge pulls, wrapped in beautiful bridle leather, were also supplied in order to add cohesion and luxury. Most of these products were finished in our dark bronze waxed to suit the darker colouring of the home, but some bespoke RAL colours were used to match specific doors and colour schemes.

Since we are used to working with high-profile clients and firms such as Staffan Tollgård, we put a great deal of attention into how we conducted this project. This included halving our standard lead times on certain extras, providing regular production updates to the client and contractor, creating bespoke flush pulls made to special measurements, providing RAL bespoke colour, and adjusting non-standard lever and rose combinations and bespoke finish options for the property's external doors. We were able to exact every detail to suit the client's needs, and our attention to these details did not go unnoticed. The end result was an incredible property worthy of its elite surroundings.

Opposite, top

Bespoke recessed pull photographed in our dark bronze waxed finish

Opposite, bottom

Bespoke recessed pull and SF1056 pocket sliding door end pull photographed in our dark bronze waxed finish



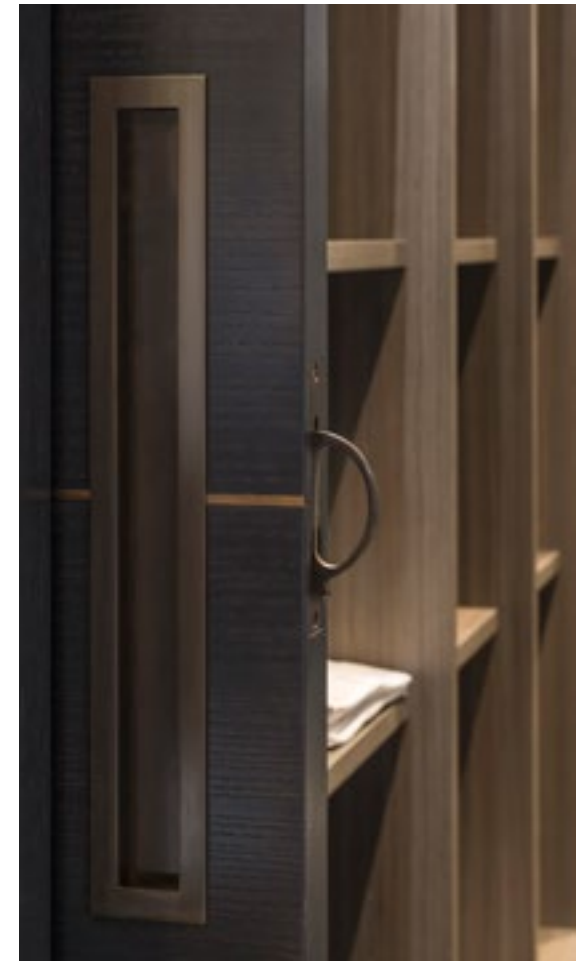


Above and right

SF1049 rectangular solid brass recessed pull in a bespoke size and SF1056 pocket sliding door end pull both photographed in our dark bronze waxed finish

Opposite

LV1100 'HOLMES' lever handle with hand stitched bridle leather and bespoke rectangular recess photographed in our dark bronze waxed finish





Bespoke rectangular recessed pull photographed in customer specified RAL colour

Opposite

LV1100 'HOLMES' lever handle with hand stitched bridle leather photographed in our dark bronze waxed finish

RESIDENTIAL DEVELOPMENT

For this endeavour, we supplied door, window and cabinet hardware to a gorgeous central London property, built by the high-end development group K10 Developments LTD (www.k10group.com), which spanned four floors. We had to ensure that our products paired perfectly with the design scheme; a chic mix of eclectic colours, art and furniture. We worked together with an interior designer, property developer and joinery contractor in order to deliver the client's vision.

The property featured doors of many different designs and textures, including marble, glass and wood. The property also had parquet flooring, substantial tiling and heavy fabrics. Therefore, the products chosen by the designer needed to sit perfectly within these varying surroundings. Our Cut lever handles proved to be the best option, as their design is wonderfully modern and cutting edge, and they paired well with the varied colours and textures. We finished them in our polished stainless steel to add maximum shine and interest to the design scheme. For the property's sliding doors, we offered the Cut handles in this same gleaming finish, but with added Perspex for long-lasting beauty and use.

Throughout this project, we offered a detailed hardware schedule, pictorial schedule, routine site visits and project meetings, samples for approval and a dedicated team that overlooked the meticulous project management. In the end, our added accents to this beautiful property enhanced it even more than we thought possible. Our products, among the art and colour, really shone through, proving that hardware, no matter how small, makes a real difference to the overall scheme.





Bespoke sliding door pull
photographed in our polished
nickel finish

CP1084 'CUBE DROP' swing
cabinet pull photographed in our
polished nickel finish

Opposite

EP1011 'MOON' edge pull handle
photographed in our mid antique
brass waxed finish



5 STOREY RESIDENTIAL DEVELOPMENT

For this project, we were asked to participate in the complete overhaul and architectural redesign of an incredible five-storey family home in the charming and elite Notting Hill area. The goal was to create a clean, uncluttered space with a lean towards minimalist design. We worked with Goldstein Ween Architects and a contractor to achieve this goal.

We provided products for a number of different sorts of door, cabinet and window configurations, including glass shower door fittings. For the property's external doors, we offered specialist roses to match their existing hardware. We provided a range of bespoke items as well as our Ashworth lever handle, known for its beautiful geometric design and smooth, clean lines. All products were specified in our dark bronze waxed finish in order to complement the lighter colour palette of the home's aesthetic, which allowed the beauty of our products to shine through. Our endeavour, which included providing a full hardware schedule, project and site meetings and door-set packing, led to the creation of an incredibly modern space, exactly as the client had envisioned it.

Designed by - Goldstein Ween Architects

Opposite

Bespoke lever handle photographed
in our dark bronze waxed finish





Opposite

HG1039 high performance
washed bearing butt hinge

ES1001 'CUBE' escutcheons

All photographed in our dark
bronze waxed finish



Top to bottom

Bespoke lever handle and
backplate

SF1056 sliding door pull

LA1022 privacy sliding door
claw lock

SF1016 'CUBE' recessed
pull with privacy turn and
emergency release

All photographed in our dark
bronze waxed finish



4 STOREY PRIVATE RESIDENCE

This project centred on a show-stopping four-storey property in Fitzrovia.

The aim of the project was to refurbish and extend the property, adding updated elements like our hardware. The house retained a classic interior design scheme and delivered a finished result which would look perfect enough to grace the cover of a luxury lifestyle magazine. We worked in collaboration with the interior architect and end client.

In order to enhance the pillars of liveability and style, the products selected had a geometric interest, yet were restrained enough to blend into the space beautifully, like our Hurleigh doorknob. This doorknob features a beautiful ribbed side and rose, with a convex accent at its top. Finished in our glimmering polished nickel, it complemented its clean surroundings, staying true to the home's light colour palette. We also supplied fluted drop pulls to match, adding cohesion throughout the space and adding interest to the home's cabinets and closets.

The result was a beautiful Fitzrovia marvel; a space that anybody would be proud to live in. For maximum visibility and efficiency, we provided a detailed hardware and pictorial schedule. The house maintained its original beauty, but the addition of complementary accents really upgraded the space to the client's vision.

Opposite

DK1017 'HURLEIGH' door knob
photographed in our polished
nickel finish





Clockwise from left

DK1017 'HURLEIGH' door knob

Swing cover

CP1082 'FLUTED' cabinet pulls

All photographed in our polished
nickel finish

LONDON HOTEL

One of our most diverse projects, this endeavour focused on a five-star London hotel's refurbishment, including public areas, rooms, suites, residences as well as the bar and restaurant. Working with the end client, interior designers, main contractor and the project managers, we had to consider the hotel's unique design scheme, which was a vibrant mix of Art Deco and London 'prestige'; however, each area of the hotel had its own unique feel.

The majority of the project was designed by G.A. Design, and as such the standards and expectations were incredibly high. Given the variety of design schemes, we provided an array of products, including some of our best bespoke work to date. We supplied our fluted drop handles and Art Deco-inspired handles, which enhanced the beautiful cabinetry in the guest rooms. We also provided the hanging rails for bedrooms and public areas.

The Bassoon bar and Massimo's restaurant were designed by David Collins Studio. For Bassoon, which is inspired by Jazz, we crafted large-scale door pulls that resembled instruments and placed them on stunning glass Art Deco doors. This was a real showstopper and elevated the musical theme of the space exponentially. To further enhance the bar space, we provided beautiful pull handles, wrapped in our rich bridle leather.

Everyone involved agreed that this was an immense success. The breathtaking decor of this fine hotel speaks for itself, and we are proud to have been a part of the project. To go the extra mile, we provided a fast-track manufacturing service, CAD drawings for bespoke products, routine site visits and a detailed hardware schedule. This project is simply one example of the varied projects we work on, and exemplifies our dedication to crafting any detail, big or small, to meet our client's vision.

"The brief from the client was simple; they wanted a 21st Century 'Grand Hotel'. Throughout the design we were committed to authentic craftsmanship. This is part of what gives this intelligently designed hotel the timeless appeal of a true classic – a place that feels comfortable in its own skin, and which imbues the guest with a similar feeling of composure."

G.A. Design





DP1004 'BEDFORD' door pull handle with hand stitched bridle leather and CP1130 'JESSE II' leather and solid brass cabinet pull both photographed in our polished nickel finish



CP1082 'FLUTED' solid brass swing cabinet pull photographed in our polished brass waxed finish



DP1004 'BEDFORD' door pull handle with hand stitched bridle leather photographed in our polished nickel finish

OUR GLOBAL PARTNERS

Chicago - represented by

Katonah Architectural Hardware

The Merchandise Mart
Suite 163
Chicago
IL 60654

Telephone: 312 670 1313
Email: chicago@katonahhardware.com

Cyprus - represented by

Mastris

1 Neas Ionias Street
Aradippou Industrial Estate
7101 Larnaca
Cyprus

Telephone: + 357 24 533683
Email: info@mastris.com

Katonah - represented by

Katonah Architectural Hardware

13 Valley Road
Katonah
NY 10536

Telephone: 914 232 7796
Email: katonah@katonahhardware.com

Los Angeles - represented by

Renaissance

972 N. La Cienega Boulevard
Los Angeles
California 90069
USA

Telephone: 310 652 0964
Email: garye@renmolding.com

Melbourne - represented by

The English Tapware Company

751 High Street
Armadale
Melbourne VIC 3143

Telephone: +61 (0) 3 9818 1403
Email: Melbourne@englishtapware.com.au

New York City - represented by

Katonah Architectural Hardware

135 East 55TH Street
7TH FL.
New York
NY 10022

Telephone: 212 813 9680
Email: newyork@katonahhardware.com

New Zealand - represented by

In Residence

8 George Street
Parnell
Auckland 1023

Telephone: +64 (0) 9 309 3023
Email: mail@inres.co.nz

Sydney - represented by

The English Tapware Company

170 Queen Street
Woollahra
Sydney NSW 2025

Telephone: +61 (0) 2 9362 4736
Email: Sydney@englishtapware.com.au

Woodland Hills California - represented by

Renaissance

22531 Ventura Boulevard
Woodland Hills
California 91364
USA

Telephone: 818 222 2771
Email: Sarah@renmolding.com

Indonesia Authorised Distributor :

SIMU VERSAILLES INDONESIA

Panglima Polim Raya 18x, Jakarta 12160, Indonesia
+62 21 7261230
www.selarasindah.com
ig @simu_indonesia

CONTACT US

Joseph Giles, Head Office, London

7 Imperial Way
Croydon
Surrey
CR0 4RR
United Kingdom

Telephone: +44 (0) 20 8680 2602
Email: info@josephgiles.com

Joseph Giles, USA

5450 W. 83rd Street
Los Angeles CA
90045
USA

Telephone: 310 674 4202
Email: charles.m@josephgiles.com

